



# Roof mounted mixed flow fans **TH-MIXVENT Series** TH-800-N-IMP



Range of roof mounted mixed flow fans supplied as standard for extract operation. The models 500 and 800 are manufactured from high strength injection moulded plastic, and models 1300 and 2000 from high grade pressed sheet steel. The bases are manufactured from sheet steel. The cowls are manufactured from pressed sheet steel (500 and 800 models) or spun aluminium (1200 and 2000).

All models incorporate a bird guard and base cable gland entry point as standard. All metallic parts are protected with a black epoxy-polyester weatherproof paint coating. The motor and impeller casing can be easily removed by 2 fixing clamps.

## **Motors**

All motors are IP44, Class B, equipped with thermal protection and ball bearings greased for life.

Electrical supply:

-Single phase 230V-50Hz (Capacitor located inside the wiring terminal box).

All motors have two speed connections also suitable for voltage speed control using electronic or auto-transformer controllers.

## **Additional Information**

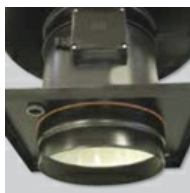
Supplied, in the standard version, as extractors. The motor and impeller casing can be removed and turned through 180° to provide supply air ventilation.

## **+ Attributes**



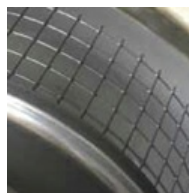
### **Flame retardant terminal box**

Very accessible wiring terminal box in flame retardant plastic V0, with capacitor located inside.



### **Circular spigot coupling**

Circular spigot coupling to facilitate the connection of circular, rigid or flexible ducting.



### **Bird-proof guard**

## **+ Acoustic characteristics**

Unfortunately an error occurred.

"

## **+ Technical characteristics**

Unfortunately an error occurred.

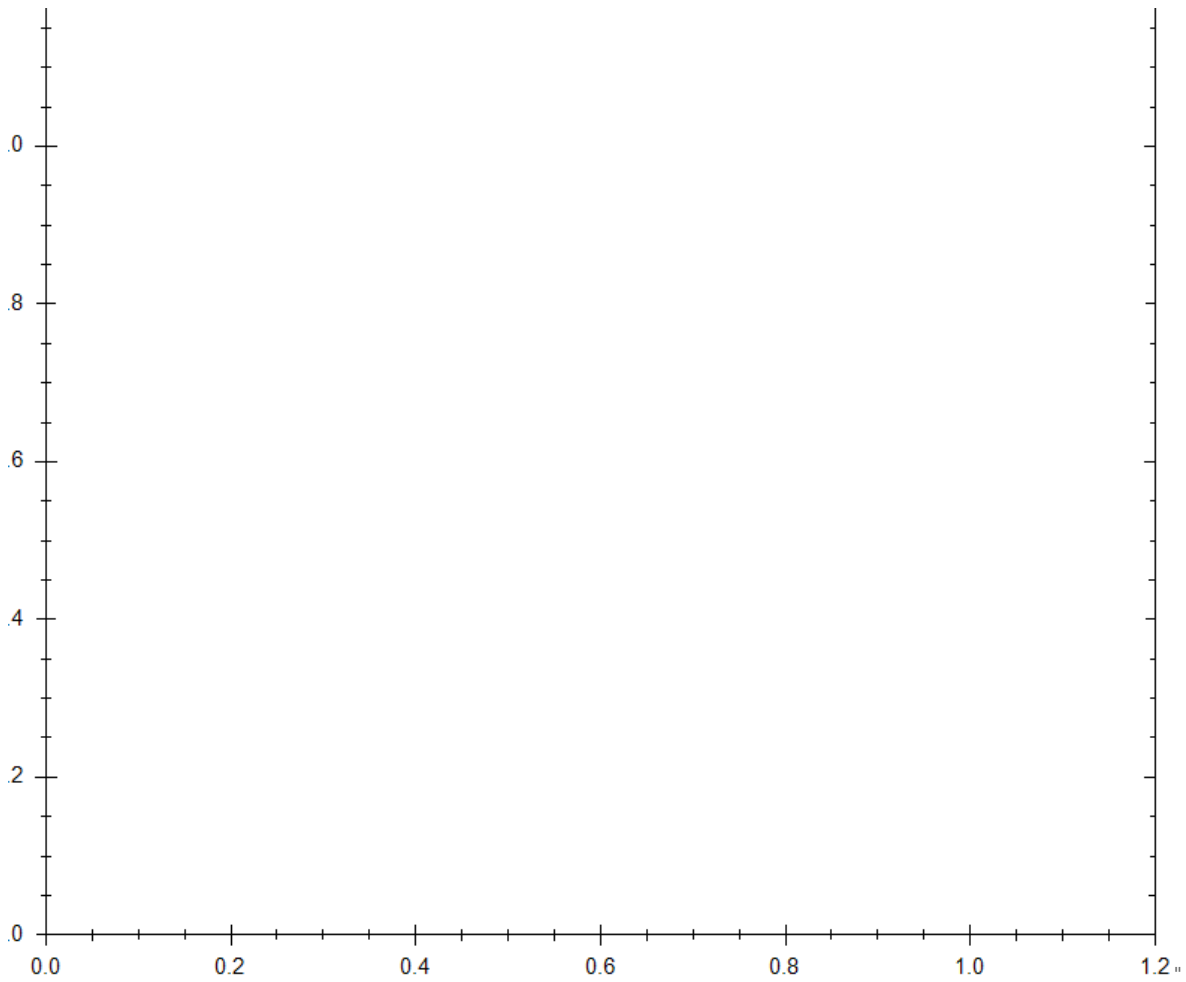
"

## + Dimensions

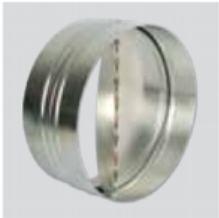
Unfortunately an error occurred.

11

## + Curves



## + Mounting Accessories



**CAR**  
Backdraft shutter.



**GSA**  
Flexible aluminium ducting.  
**GSI**  
Acoustic aluminium ducting.



**CX**  
Worm drive clips.



**SIL**  
Sound attenuator.

## + Electrical Accessories

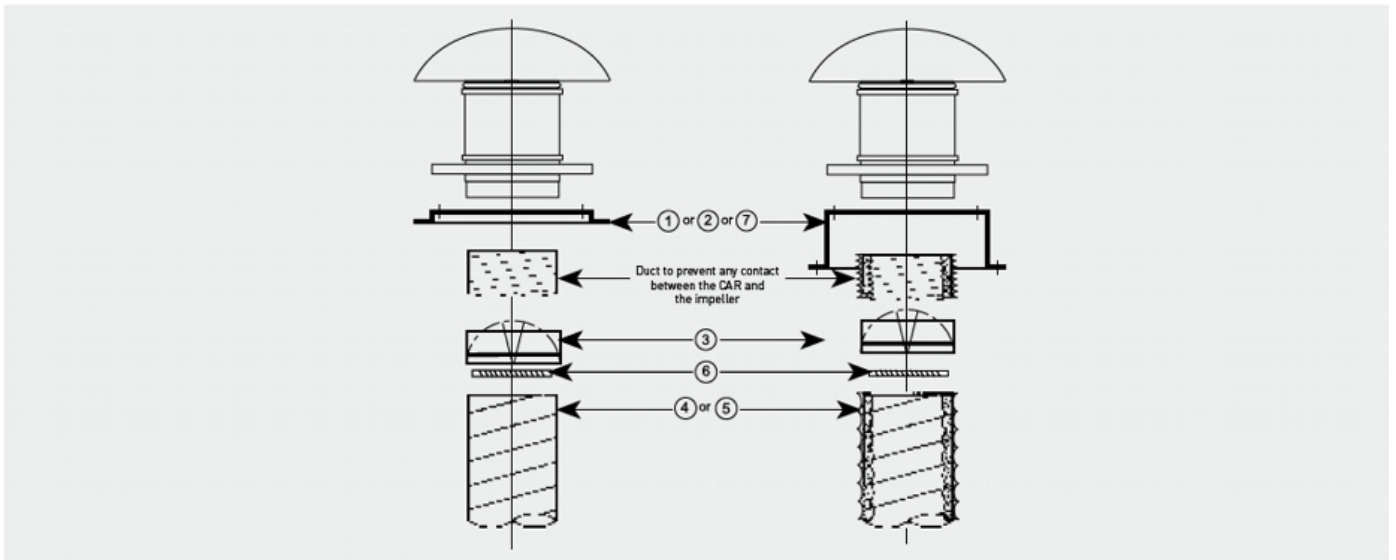


**REGUL-2 and COM-2**  
Two speed switches.

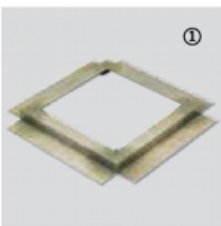


**REB**  
Electronic, single phase speed controller.

## + Specific Accessories



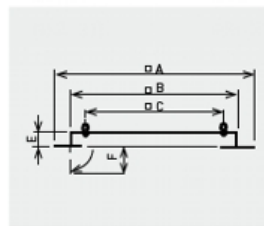
Model	① Sealing frame	② Flat roof upstand	③ Backdraft shutter	④ Flexible ducting	⑤ Flexible acoustic ducting	⑥ Worm drive clips	⑦ Support base for curb mounted installation
TH-500/150	JMS-300	JBS-300	CAR-150	GSA-150	GSI-160	CX-215	BI-3
TH-500/160	JMS-300	JBS-300	CAR-160	GSA-160	GSI-160	CX-215	BI-3
TH-800 N	JMS-300	JBS-300	CAR-200	GSA-200	GSI-200	CX-250	BI-3
TH-800	JMS-300	JBS-300	CAR-200	GSA-200	GSI-200	CX-250	BI-3



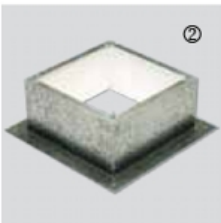
①

### JMS Sealing frame

- For mounting the roof fans on an up stand or base.
- Provided with screws and gasket for a complete seal.



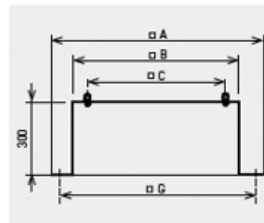
Model	A	B	C	E	F
JMS-300	470	290	245	50	71
JMS-435	600	420	330	50	71
JMS-560	725	545	450	50	71



②

### JBS Flat roof up stand

- For mounting fans on flat roofs with no up stands.
- Internal insulation to avoid condensation.
- Provided with screws and gasket for a complete seal.



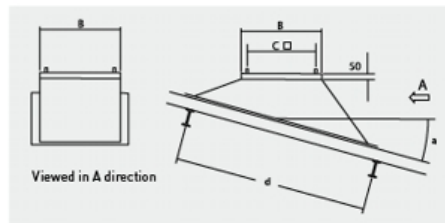
Model	A	B	C	E	G
JBS-300	470	289	245	300	38
JBS-435	600	419	330	300	51
JBS-560	725	544	450	300	63



⑦

### BI Support base for inclined curb mounted installations

- To ensure the proper installation of the BI product it is essential to specify the roof pitch angle and the distance between the roof beam profiles (as shown).



Model	B	C
BI-3	289	24
BI-4	419	33
BI-5	544	45

d: distance between the roof beam profiles  
a: roof pitch angle (curb)