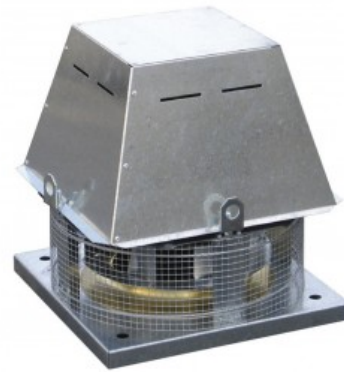




ROOF MOUNTED FANS FLAME PROOF TCDH EXD Series

TCDH EXD 030-6 IIBH2 T4
0,18KW (230/400V50HZ) PTC



Flame proof versions in accordance to ATEX Directive for three phase models:
- Flame proof II 2G Ex d IIB T4.
On request, versions II 2G Ex d IIC T4.



The TCDH EXD range of roof fans is specially designed for the ventilation / extraction of potentially hazardous and explosive gases.
Working temperature up to 40°C. Direct drive backward curved centrifugal impeller, manufactured from galvanised sheet steel and aluminium hub.
Base manufactured from galvanised sheet steel and brass inlet ring.
Cowl manufactured in galvanised sheet steel.
Three phase motor, IP55, class F.
Bird proof guard in accordance with EN ISO 13857 Standard.

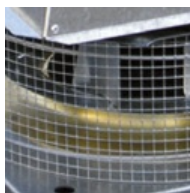
Motors

Available in 4, 6 or 8 poles, depending on versions.
Three phase motor 230/400V-50Hz, IP55, class F.
1 speed motor with PTC thermal protection to connect a frequency inverter.

+ Attributes



Easy to install
Supports easing the installation on the roof.



Bird-proof guard



Backward curved centrifugal impellers
To prevent accumulation of dirt.

+ Acoustic characteristics

Unfortunately an error occurred.

''

+ Technical characteristics

Unfortunately an error occurred.

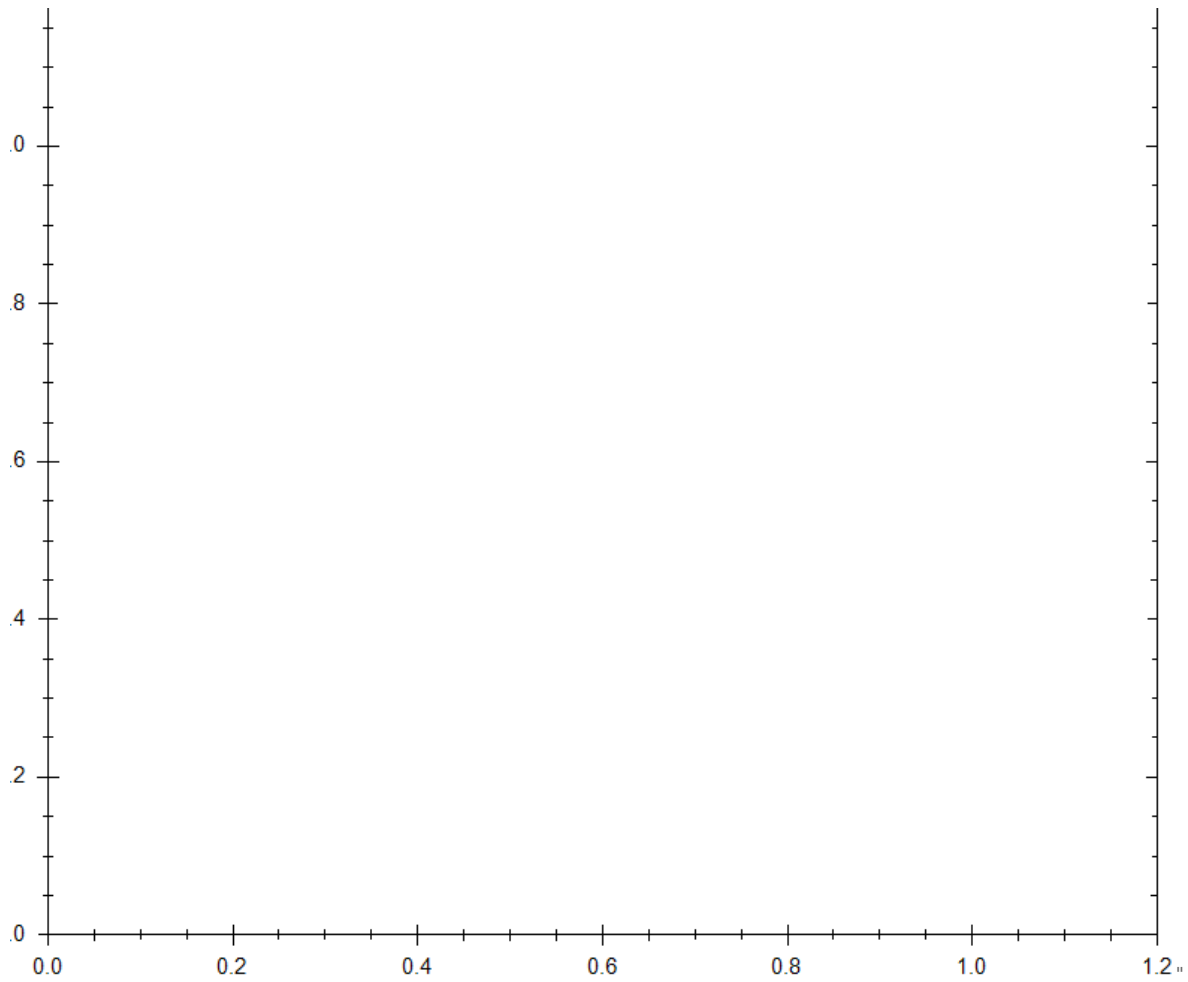
''

+ Dimensions

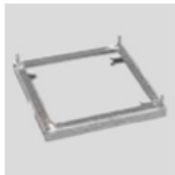
Unfortunately an error occurred.

11

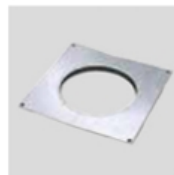
+ Curves



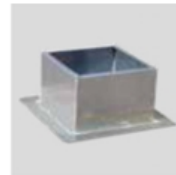
+ Mounting Accessories



JMS
Sealing frame
For mounting a roof fan on an up stand or base.



JPA
Accessory adapter plate
To connect the roof fan to circular ducting.



JBS
Flat roof up stand
For mounting a roof fan on a flat roof without up stand.